

## WEST OF ENGLAND

“BUILDING OUR FUTURE”

# HAVE YOUR SAY ON THE WEST OF ENGLAND EMERGING JOINT SPATIAL PLAN AND JOINT TRANSPORT STUDY

LOCATION: YATE/ SODBURY



The four West of England councils - **North Somerset, Bristol City, South Gloucestershire** and **Bath and North East Somerset** would like your involvement in the next steps towards drawing up plans which will steer development in housing and transport provisions over the next **20 years**.



We're holding an information event and you're invited to come and see our proposed plans, and give us your comments.

### EVENT DETAILS:

**WHERE:** Chipping Sodbury Town Hall

**WHEN:** Thursday 10 November, 1 – 7pm

More information on the Joint Spatial Plan and Transport study is available at [www.jointplanningwofe.org.uk](http://www.jointplanningwofe.org.uk)

If you have any questions please email [comments@jointplanningwofe.org.uk](mailto:comments@jointplanningwofe.org.uk)

## WEST OF ENGLAND

“BUILDING OUR FUTURE”

# HAVE YOUR SAY ON THE WEST OF ENGLAND EMERGING JOINT SPATIAL PLAN AND JOINT TRANSPORT STUDY

LOCATION: CHARFIELD



The four West of England councils - **North Somerset, Bristol City, South Gloucestershire** and **Bath and North East Somerset** would like your involvement in the next steps towards drawing up plans which will steer development in housing and transport provisions over the next **20 years**.



We're holding an information event and you're invited to come and see our proposed plans, and give us your comments.

### EVENT DETAILS:

**WHERE:** Charfield Memorial Hall

**WHEN:** Tuesday 15 November, 1 – 7pm

More information on the Joint Spatial Plan and Transport study is available at [www.jointplanningwofe.org.uk](http://www.jointplanningwofe.org.uk)

If you have any questions please email [comments@jointplanningwofe.org.uk](mailto:comments@jointplanningwofe.org.uk)

## WEST OF ENGLAND

“BUILDING OUR FUTURE”

# HAVE YOUR SAY ON THE WEST OF ENGLAND EMERGING JOINT SPATIAL PLAN AND JOINT TRANSPORT STUDY

LOCATION: THORNBURY



The four West of England councils - **North Somerset, Bristol City, South Gloucestershire** and **Bath and North East Somerset** would like your involvement in the next steps towards drawing up plans which will steer development in housing and transport provisions over the next **20 years**.



We're holding an information event and you're invited to come and see our proposed plans, and give us your comments.

### EVENT DETAILS:

**WHERE:** Armstrong Hall, Thornbury

**WHEN:** Friday 25 November, 1 – 7pm

More information on the Joint Spatial Plan and Transport study is available at [www.jointplanningwofe.org.uk](http://www.jointplanningwofe.org.uk)

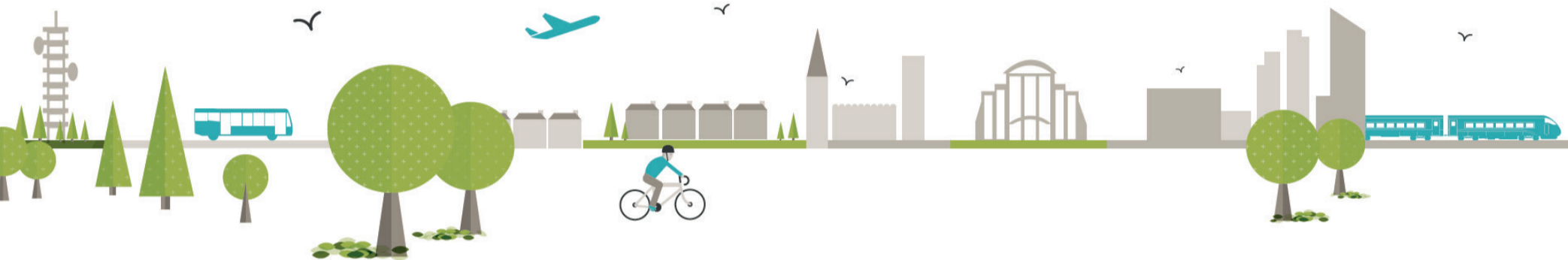
If you have any questions please email [comments@jointplanningwofe.org.uk](mailto:comments@jointplanningwofe.org.uk)

## WEST OF ENGLAND

“BUILDING OUR FUTURE”

# HAVE YOUR SAY ON THE WEST OF ENGLAND EMERGING JOINT SPATIAL PLAN AND JOINT TRANSPORT STUDY

LOCATION: COALPIT HEATH



The four West of England councils - **North Somerset, Bristol City, South Gloucestershire** and **Bath and North East Somerset** would like your involvement in the next steps towards drawing up plans which will steer development in housing and transport provisions over the next **20 years**.



We're holding an information event and you're invited to come and see our proposed plans, and give us your comments.

### EVENT DETAILS:

**WHERE:** Coalpit Heath Village Hall

**WHEN:** Monday 21 November, 1 – 7pm

More information on the Joint Spatial Plan and Transport study is available at [www.jointplanningwofe.org.uk](http://www.jointplanningwofe.org.uk)

If you have any questions please email [comments@jointplanningwofe.org.uk](mailto:comments@jointplanningwofe.org.uk)

## WEST OF ENGLAND

“BUILDING OUR FUTURE”

# HAVE YOUR SAY ON THE WEST OF ENGLAND EMERGING JOINT SPATIAL PLAN AND JOINT TRANSPORT STUDY

LOCATION: BUCKOVER



The four West of England councils - **North Somerset, Bristol City, South Gloucestershire** and **Bath and North East Somerset** would like your involvement in the next steps towards drawing up plans which will steer development in housing and transport provisions over the next **20 years**.



We're holding an information event and you're invited to come and see our proposed plans, and give us your comments.

### EVENT DETAILS:

**WHERE:** Falfield Village Hall

**WHEN:** Monday 28 November, 1 – 7pm

More information on the Joint Spatial Plan and Transport study is available at [www.jointplanningwofe.org.uk](http://www.jointplanningwofe.org.uk)

If you have any questions please email [comments@jointplanningwofe.org.uk](mailto:comments@jointplanningwofe.org.uk)